



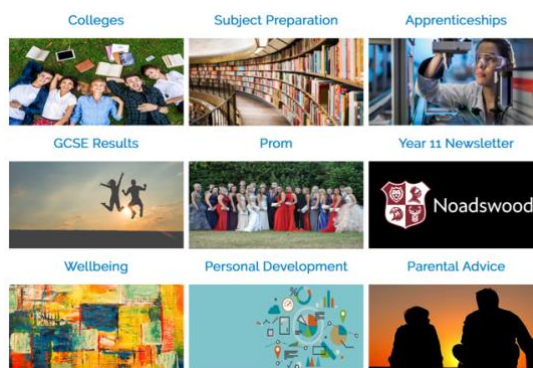
Results Information Guide

Dear Year 11,

We hope the results you have opened today are what you need for your next steps and are a true reflection of the work that you had put in and what you would have gone on to achieve.

This document is an accompanying guide explaining the results documents you have received. It also includes further details on the submission of the Centre Assessed Grades, the Ofqual standardisation process and the latest information about the appeals process which you should read carefully. The process of grading this year is unprecedented, raising many questions. Hopefully this document gives some initial guidance, but do speak to your House Leader or email exams@noadswood.hants.sch.uk if you require further support. We have also produced the Year 11 Portal which has a wealth of information and guidance:

<http://frog.noadswood.hants.sch.uk/year11portal>



Documents

You will have received on paper, via your school email (sign-in via [FROG](#)) and [ePraise](#) (within the My Profile > Documents section online or using the App) three documents*: -

- **Statement of Results** – what you have been awarded
- Tutor and House Leader Farewell with a message from Miss Marshall
- Results Information Guide

*Electronic versions will be released around 12pm



Document 1 – Statement of Results

The **Statement of Results** shows the **GCSE Results** you have been awarded from the examining body. We were really pleased to hear that the Secretary of State for Education announced that the grade for each subject is the higher of either the Centre Assessed Grade (CAG) which was submitted by your teachers or the **standardised** grade using the Ofqual algorithm and methodology ([click link](#)) and you will have received the higher of these two results today ([click link](#)).

The **Statement of Results** will show the qualification, the awarded result and the exam board with the type of qualification. For example:

Qualification	GCSE Result (Exam Board and Qualification type)
Example Subject 1	7 (AQA – GCSE)
Example Subject 2	L2P (Edexcel – BTEC Level 1/2 First Award)
Example Subject 3	L2D* (OCR – Cambridge National)

Guidance of Qualifications

GCSE results are graded on a 9-1 scale (9 being the highest).

BTEC and **Cambridge Nationals** are graded in the range:

- Level 2 Distinction* (L2D*)
- Level 2 Distinction (L2D)
- Level 2 Merit (L2M)
- Level 2 Pass (L2P)
- Level 1 Distinction (L1D)
- Level 1 Merit (L1M)
- Level 1 Pass (L1P)

Achieving a Level 2 Pass (L2P) is equivalent to a GCSE Pass at grade 4.

Additional Mathematics **FSMQ** is graded from A-E.

GCSE, BTEC, Cambridge Nationals and the FSMQ also include a U (FAIL) grade.



As per the official results statement, the **Statement of Results** document **will show the higher of these two grades**. More information about the standardisation can be found with the Ofqual guide ([click link](#)) and the technical report shows the model in detail ([click link](#)).

Exam Certificates are not issued by the Exam Boards until much later in the term: colleges and employers are aware that you will not have exam certificates until later and are happy to accept your Statement of Results.

The **Centre Assessed Grade (CAG)** is the grade which was submitted to the exam boards by your teacher, overseen by the Curriculum Leader of that subject.

The grades submitted went on the principle of a grade which was most likely to be achieved by you – the mantra behind this grading was to be **objective, fair** and **evidence-based** without **bias**. A wide variety of information was used in submitting this grade – from classwork, mock examinations (taking into account their validity and type which was set), coursework which had been completed up until the point of CAG submission (and the likely grade this would have achieved) and most importantly the professional opinion of the teacher knowing you, individually, in the subject studied. These CAG results were internally standardised by Noadswood, again to ensure **objective, fair** and **evidence-based** results before submission.

In order to obtain these grades, subject teachers with Curriculum Leaders for each subject were asked to use their professional judgement with evidence pertinent to projecting a likely grade for you as an individual. The whole cohort of results was then closely looked at, ensuring **grades were made to be as fair as they could be**, using the Ofqual guidance ([click link](#)).



Document 2 – Tutor and House Leader Farewell

Your Tutor and House Leader have written you a personal farewell message – the disruption to our usual goodbye was really upsetting for us all, but we hope in reading these they will bring back a few memories of your time at Noadswood.





Outline of Centre Assessed Grades Process

Your teachers, along with curriculum leaders, were asked to give you a judgement GCSE grade taking into account the evidence of work you have done (mocks / work in lesson / work that was integral to the KS4 course such as coursework). These initial grades were closely looked at, ensuring **grades were made to be as fair as they could be**, using the Ofqual guidance, and this is the CAG which was submitted.

Your teachers were asked to rank these grades – for example if 10x students were projected to get a grade 6 in History they were ranked 1 (most likely) to 10 (least likely) *within* that grade.

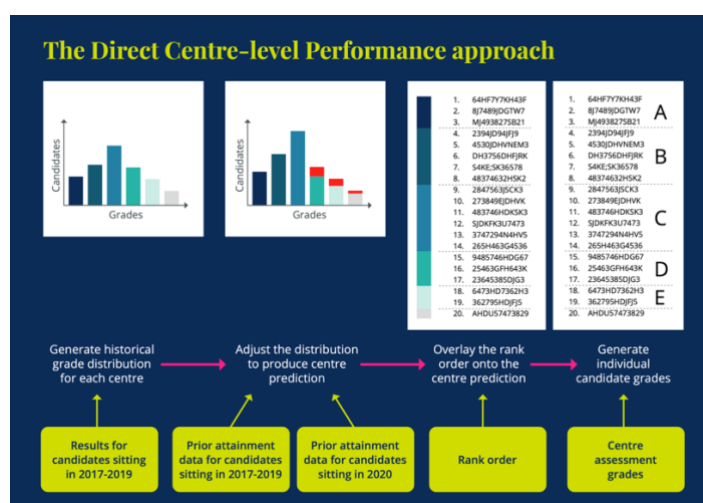
The exam boards then standardised the grades nationally to fit an expected national pattern (looking at KS2 results / the results candidates have historically achieved at Noadswood in that subject). This is the methodology and algorithm Ofqual used.

There is an extensive Ofqual document attached ([click here](#)) to see the process employed.



More information about this can be found with the Ofqual guide ([click link](#)) and the technical report shows the model in detail ([click link](#)).

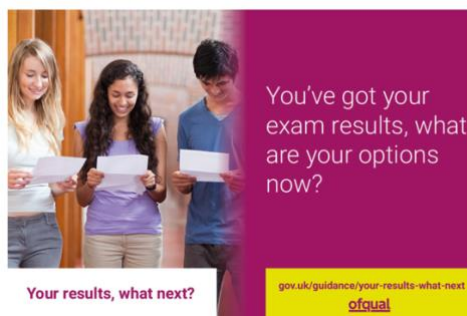
The visual guide below shows the grading approach taken by Ofqual:





Appeals

It is pleasing to hear that the final result will be either the Centre Assessed Grade which has been **standardised** or the original Centre Assessed Grade, whichever is higher. We, as a school took a great deal of care ensuring our Centre Assessed Grades were objective, fair and conducted with great rigour (ensuring no over-inflation). The Ofqual link ([click here](#)) shows the latest appeal process:



In reference to your results, you will have two results (the higher of which is shown on your Statement of Results) associated with each subject – the CAG and the standardised CAG. You also then have the opportunity to ‘retake’ the exam, of which the highest-grade counts.

1. The Centre Assessed **standardised** Grade (algorithm generated)
2. The original Centre Assessed Grade
3. The ability to ‘retake’ the exam

You cannot appeal your Centre Assessed Grade or the **standardised** Centre Assessed Grade you have been awarded. However, there are grounds to which Noadswood can make an appeal on your behalf, though they are limited at time of writing to:

- Noadswood made an error when submitting the CAG / rank
- A procedural error by the exam board
- Wrong data used by the exam board (e.g. wrong prior attainment / historical data for standardisation)
- The exam board has made a mistake in issuing grades
- There are exceptional circumstances – [Ofqual guidance](#)

If you are concerned with any grade awarded and wish to appeal, please email: exams@noadswood.hants.sch.uk and we will discuss the grounds of the appeal and how we can best support you.



Autumn Exams

More information will follow from the DfE, but our understanding is that autumn exams will exist for students unhappy with the awarded grade for any subject. This is something that the DfE are consulting on and will inform nationally when a decision has been made but it likely that these exams will take place in November 2020 (and the qualification will consist of just an exam component (no coursework)). The exams are likely to take place at schools rather than colleges, and we would look to our other local schools to assist each other in hosting given exams, numbers dependent.

Again, more information about this will be passed on to you when we are made aware of the logistics from Ofqual.

Subject Access Request

You have the right to request, under a Subject Access Request, both your Centre Assessed Grade and the rank which was submitted to the exam boards by your teacher. To request this document, please email: exams@noadswood.hants.sch.uk – we are obliged to have this document emailed to you within one month of request but will aim to get it to you as soon as we can.